

Good Sam and Trout & Salmon

Corey Fisher, Public Land Policy Director



www.tu.org/goodsam

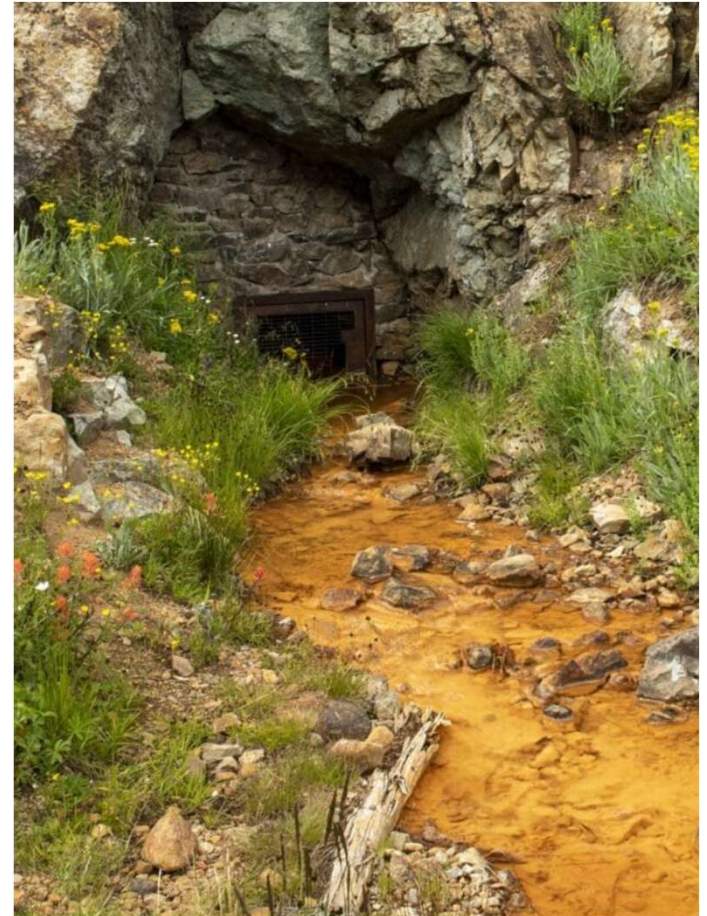
Good Sam and AML Policy



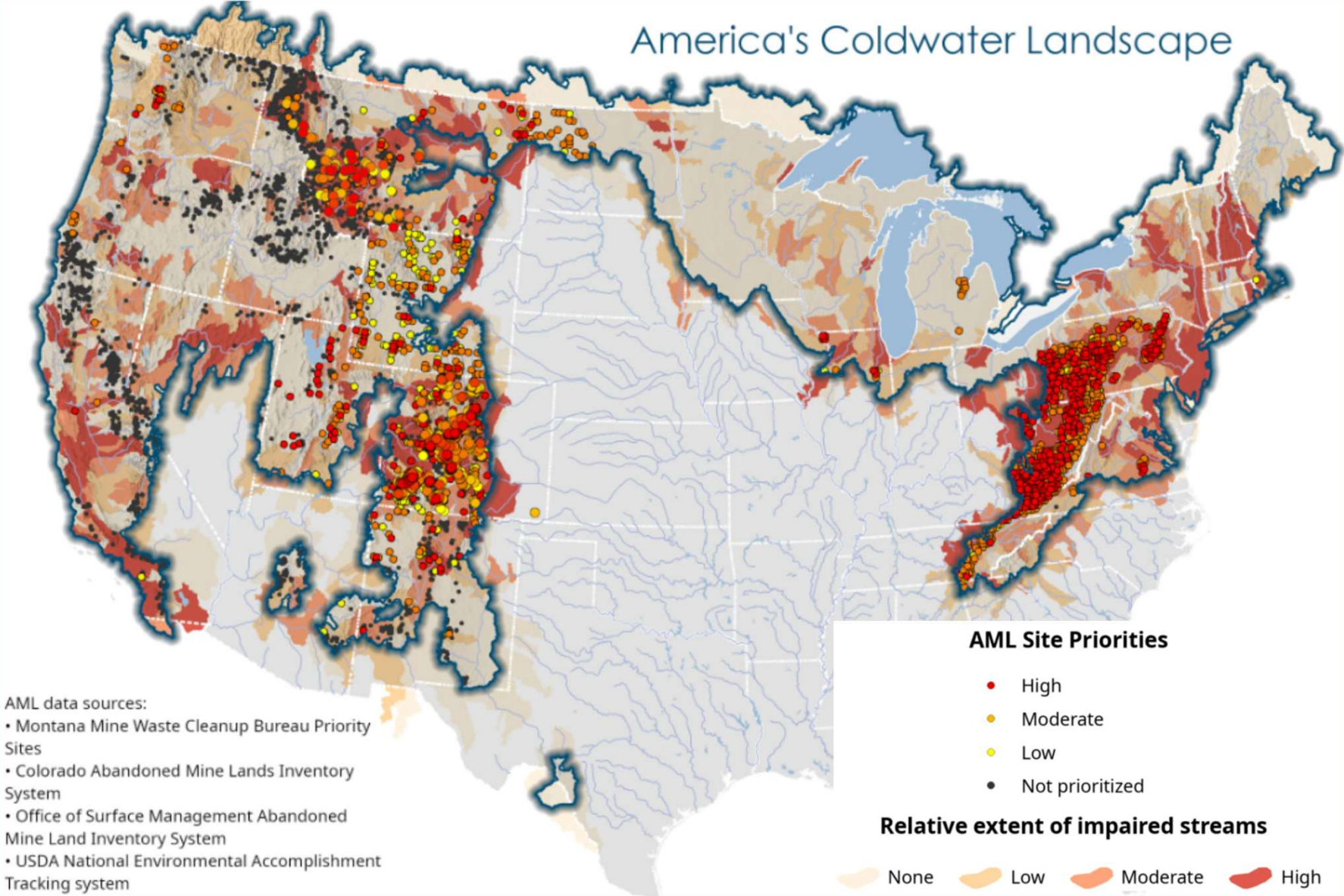
Why it Matters



- 40% of headwater streams polluted
- 110,000 miles listed for heavy metals or acidity
- 20% of impaired stream miles in native trout subwatersheds
- 92% of native trout face some level of risk
- This is a tremendous problem, but it is fixable!



America's Coldwater Landscape



AML data sources:

- Montana Mine Waste Cleanup Bureau Priority Sites
- Colorado Abandoned Mine Lands Inventory System
- Office of Surface Management Abandoned Mine Land Inventory System
- USDA National Environmental Accomplishment Tracking system

AML Funding



- Infrastructure Investment and Jobs Act hardrock AML program
- \$3 billion authorization, but no money in the bank
- “...shall establish a program to inventory, assess, decommission, reclaim, respond to hazardous substance releases on, and remediate abandoned hardrock mine land...”
- 50% for work on federal lands and 50% grants to Tribes and states
- FY-23 Appropriations is a key moment



Critical Minerals



- Supply chain executive order and report
- DOI mining reform principles
- Defense Production Act
- Hunting and Fishing Group Report



Are we making progress?

