

# BHP

## Arizona Legacy Assets Engagement with Tribal Communities

Maricela Solis de Kester, Manager  
Corporate Affairs, US/Canada Legacy Assets  
Non operating Joint Ventures

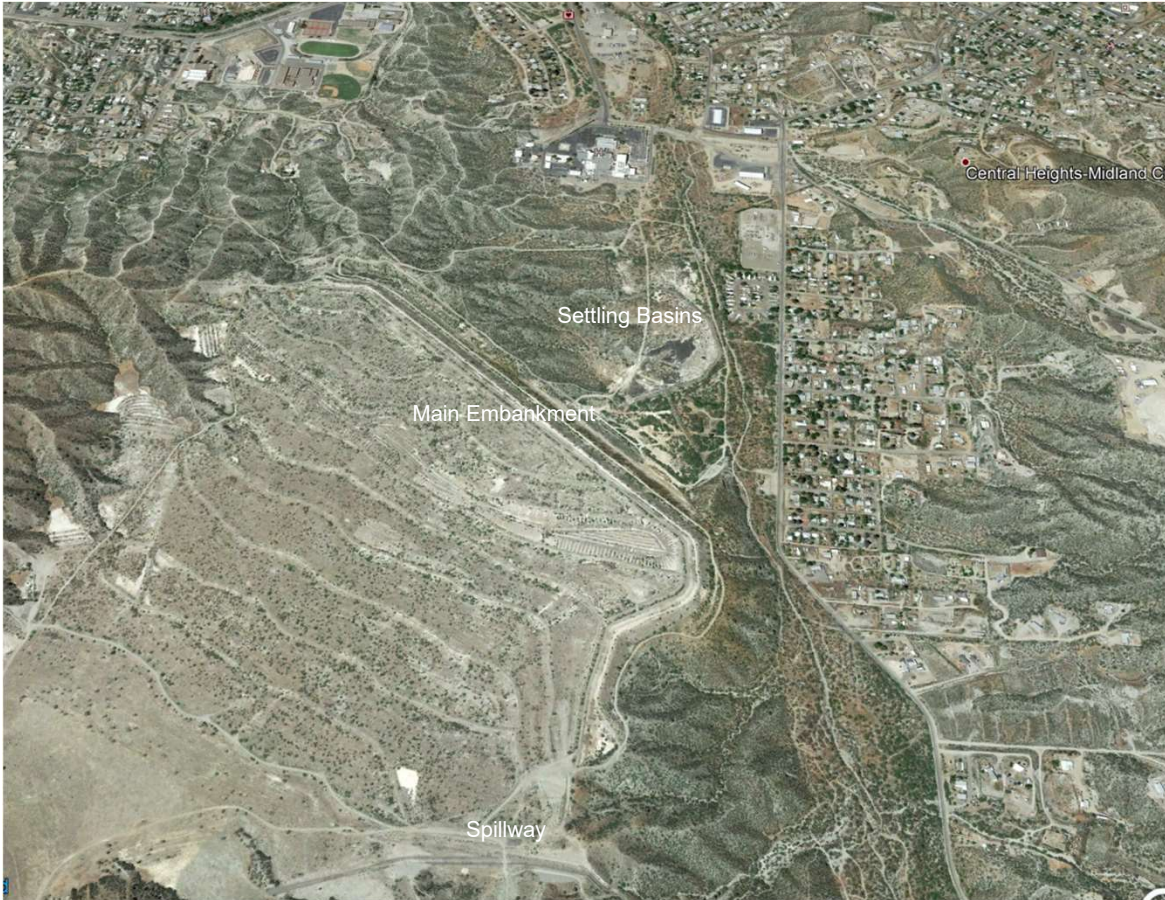


# Engagement with the Arizona Tribes

- Solitude
- Site Tours and Consultations
- Treatment Plan



# Solitude Tailings Facility



## Current Status

- Facility operated by previous Owners and reclaimed in 1960
- BHP has been studying options to mitigate risk and upgrade site closure to meet current requirements

# Proposed Remedy – External Buttress



Plan View



Front View

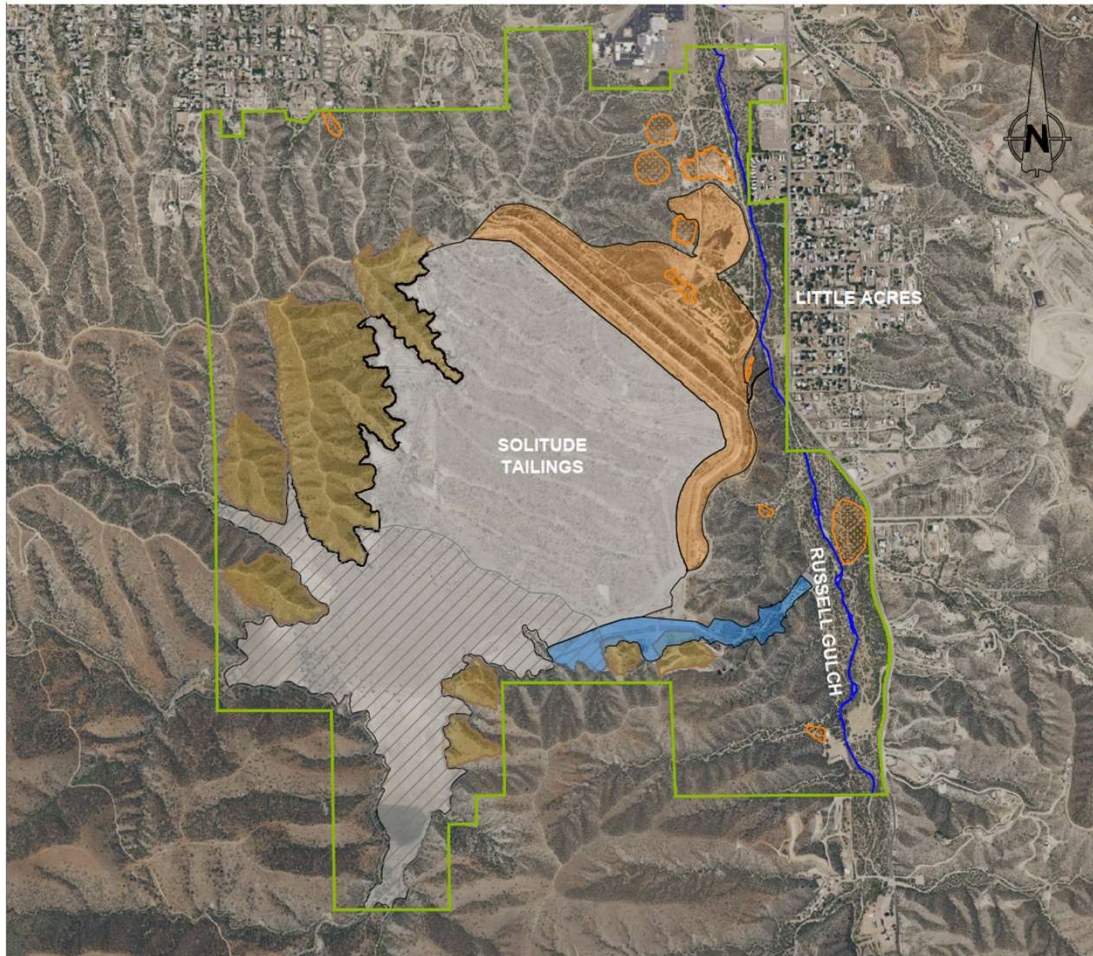
- Will provide robust protection against a catastrophic dam failure and adhere to current global standards

## Solitude Tribal Site Tour 2021

- While avoidance is always preferable, the human health and safety need of the Solitude remediation project was acknowledged by the THPOs, and mitigation measures were discussed
- The typical mitigation for prehistoric sites is data recovery excavations to recover the information on the archaeological sites, collect a sample of the prehistoric artifacts, and recover all ancestral remains and funerary objects
- The THPOs requested specific mitigations for the two prehistoric sites that will be impacted at Solitude



## Location of currently identified Cultural Sites



### Main Impact Areas

- Buttress and Landform construction
- Excavation in the settling basin area to remove eroded tailings and construct a sediment pond
- Cultural heritage and treatment plan

# Tribal Input: Solitude Cultural Site Mitigation

- Full Data Recovery of the two sites affected by the planned tailings buttress
- Continued involvement of the tribes during excavations and remediation
- Use of a tribal osteological team to recover human remains
- Use of a tribal repository for the recovered artifacts
- Tribal monitors during construction
- Preservation of other prehistoric sites at Solitude

# Treatment Plan

- Full Data Recovery of the two sites affected by the planned tailings buttress
- Continued involvement of the tribes during excavations and remediation
- Use of a tribal osteological team to recover human remains
- Use of a tribal repository for the recovered artifacts
- Tribal monitors during construction
- Preservation of other prehistoric sites at Solitude





**BHP**